

NEXT GENERATION

## INDICATION BY DESIGN

PREFERRED MECHANICAL STRENGTH IDEAL HANDLING SUPERIOR HEALING

Next generation C-QUR™ Mesh combines Atrium's clinically proven ProLite™ polypropylene mesh material with an all natural Omega 3 bioabsorbable coating derived from highly purified, contaminant-free pharmaceutical grade fish oil. This proprietary blend of natural Omega 3 fatty acids, alcohols, and triglycerides offers enhanced mechanical handling and healing properties not found with other soft tissue reinforcement materials.

### Atrium sets the bar for clinical performance in soft tissue repair

With nearly 3 million surgical mesh implants worldwide, Atrium understands the importance of mechanical integrity. Properties such as burst strength, suture, and tack retention are important when choosing a preferred surgical solution. Atrium has carefully researched and tested ProLite™ monofilament mesh construction to ensure the optimization of those mechanical features required for a strong, reinforced repair. With the preferred mechanical strength of ProLite™, next generation C-QUR™ offers the discriminating surgeon "unlimited" trimming and fixation flexibility. Additionally, the O3FA coating provides for a more natural healing experience with less tenacious visceral tissue attachment.\* Atrium's "Indication by Design" approach empowers the surgeon to choose a product that has proven mechanical durability and the enhanced biocompatibility of Omega 3 fatty acid technology.

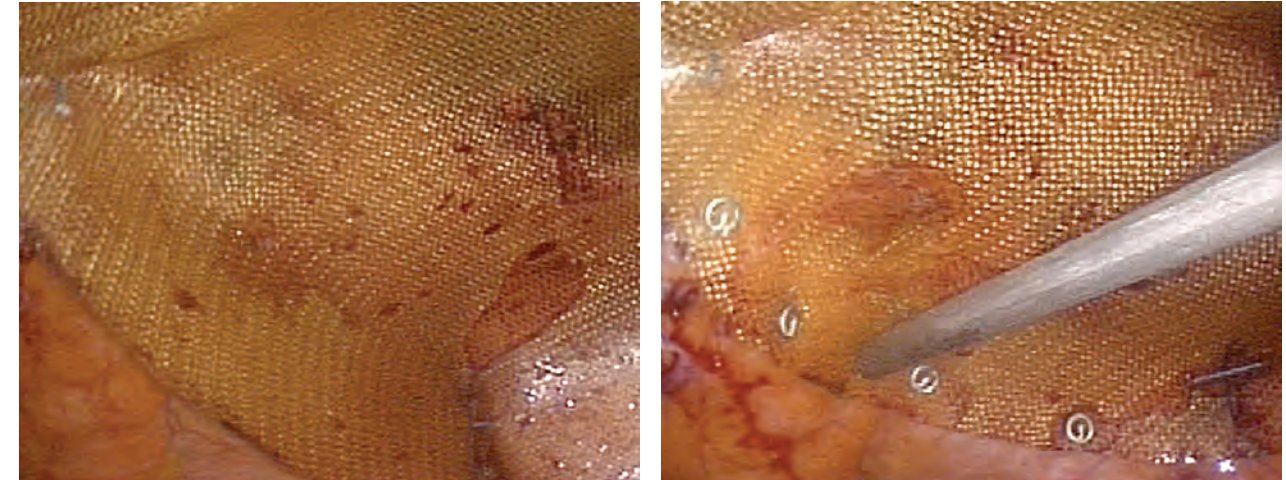
### Unequaled handling, see-thru clarity and implantation performance

By all measures, next generation C-QUR™ Mesh outperforms all competitive coated meshes in terms of ease-of-use. Atrium has developed state-of-the-art processes that result in a more conformable and more durable bioabsorbable coating than previous models. This new process results in a more uniform, flexible, and durable coating, significantly improving handling, and provides for uniform cellular penetration following coating absorption. Next generation C-QUR mesh exhibits a thinner, softer feel with tight trocar "roll up capability", and minimal to no "edge curl" following laparoscopic deployment. Next generation C-QUR™ Mesh "lays flat" and "glides" easily along tissue during placement for unmatched surgical convenience and ideal anatomical "conformance."

\*Preclinical studies and data on file at Atrium.

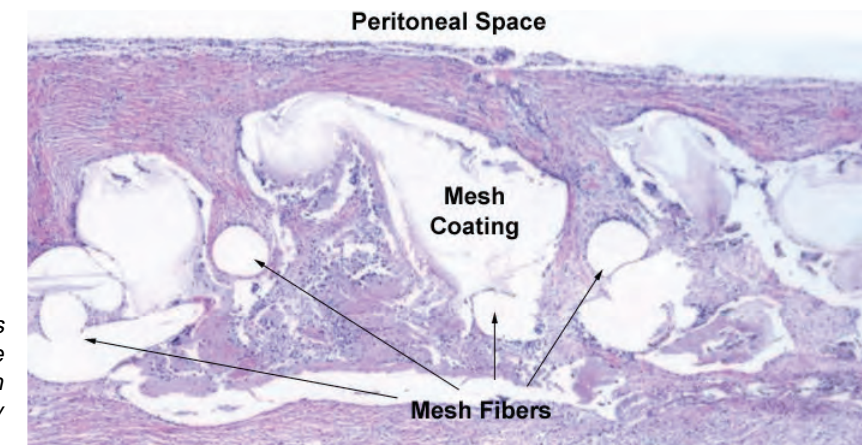


NEXT GENERATION



### Enhanced healing with Omega 3 fatty acid coating technology

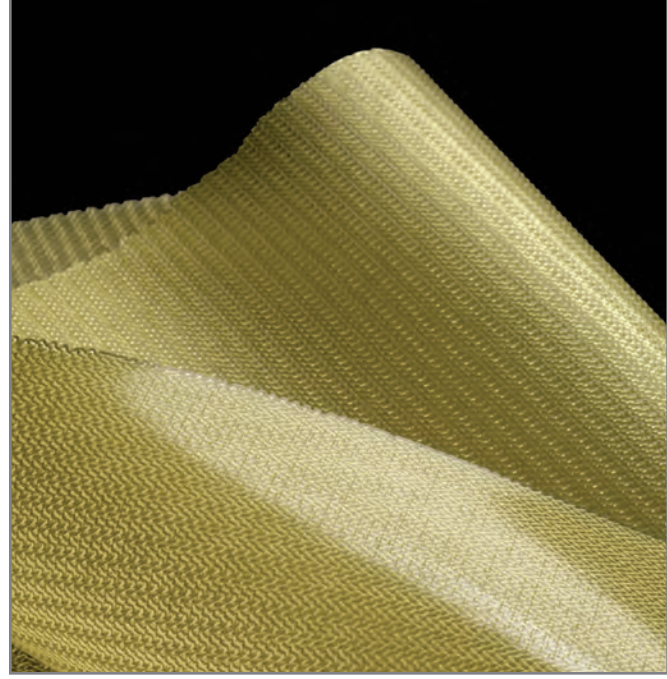
In pre-clinical studies, Atrium's next generation C-QUR™ mesh exhibited significantly less inflammatory cell recruitment than uncoated polypropylene, resulting in a fully incorporated, well-anchored reinforcement to the abdominal wall, with little to no evidence of "uncontrolled" connective tissue scarring or visceral tissue attachment. This bioabsorbable, all natural coating technology promotes a more natural healing response enabling complete incorporation throughout the mesh.



Histology shows complete tissue incorporation with minimal inflammatory response.



**O3FA** | Omega 3  
BioAbsorbable Oil  
Coating Technology

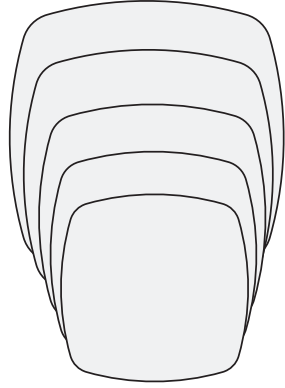


*Indication by Design:  
Bridging the Gap Between  
a Preferred Mechanical  
Solution and Enhanced  
Biocompatibility*



**Shape > Square / Round**

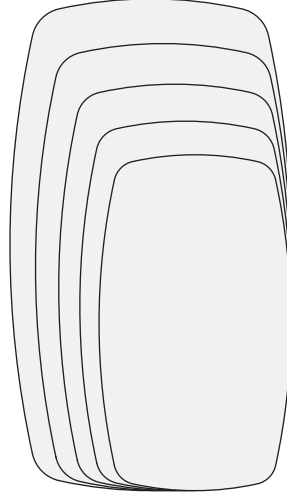
Qty.	Part No.	Cm	Inches	Box Qty.
✓	31543	9 x 9	3.5 x 3.5	1 each
✓	31544	12.5 x 12.5	5 x 5	



ADDITIONAL NEW SIZES PENDING

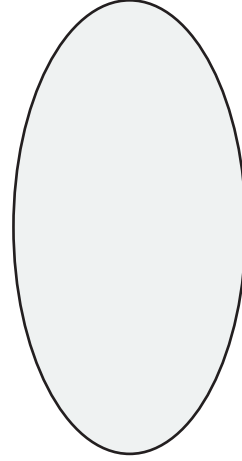
**Shape > Oblong / Oval**

Qty.	Part No.	Cm	Inches	Box Qty.
✓	31526	7.5 x 15	3 x 6	
✓	31528	10 x 15	4 x 6	
✓	31527	11 x 14	4.3 x 5.5	1 each
✓	31531	13.5 x 18	5.4 x 7	
✓	31533	15 x 20	6 x 8	
✓	31534	15 x 23	6 x 9	



**Shape > Mid-Line Oval**

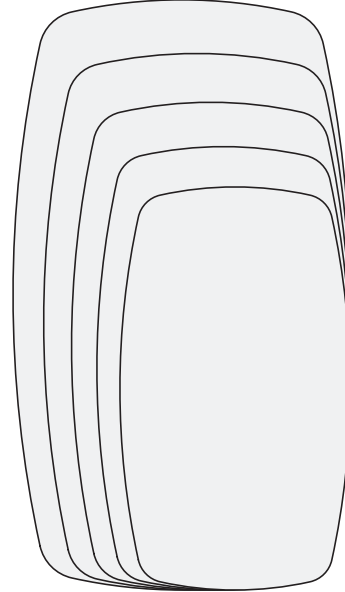
Qty.	Part No.	Cm	Inches	Box Qty.
✓	31538	16 x 31.2	6.3 x 12.3	1 each



ADDITIONAL NEW SIZES PENDING

**Shape > X-Large Oblong / Oval**

Qty.	Part No.	Cm	Inches	Box Qty.
✓	31535	18 x 23	7 x 9	
✓	31536	20.5 x 25.5	8 x 10	
✓	31537	20.5 x 30.5	8 x 12	1 each
✓	31540	25.5 x 35.5	10 x 14	
✓	31542	30.5 x 45.5	12 x 18	



Signature \_\_\_\_\_ Date \_\_\_\_\_

For Evaluation

Date \_\_\_\_\_

For Conversion

Date \_\_\_\_\_



**ATRIUM MEDICAL CORPORATION**  
5 Wentworth Drive  
Hudson, New Hampshire 03051 U.S.A.  
☎ 603-880-1433 ☎ 603-880-6718

**ATRIUM EUROPE B.V.**  
Remdementsweg 20 B  
3641 SL Mijdrecht, The Netherlands  
☎ +31-297-230-420 ☎ +31-297-282-653

**ATRIUM AUSTRALIA-PACIFIC RIM PTY. LTD.**  
L1 Bridgepoint, 3 Brady Street  
Mosman NSW 2088 Australia  
☎ +61-2-9960-0169 ☎ +61-2-9969-2735

Atrium® © Atrium Medical Corporation 2009. All rights reserved. Printed in U.S.A. 2/09 Part #0049B  
Atrium and C-QUR are trademarks of Atrium Medical Corporation.

[www.atriummed.com](http://www.atriummed.com)