

ClearWay™ RX

Local Therapeutic Infusion Catheter



Advanced low pressure balloon infusion maximizes drug penetration locally within the vessel

Extraordinarily easy to place coronary or small vessel RX infusion balloon catheter

The World's First Rapid Exchange Local Therapeutic Infusion Catheter

- .014" Guidewire Compatible
- Ultra Low Profile RX design
- Exceptional Handling

World's Most Efficient Atraumatic Infusion Balloon Technology

ClearWay™ RX Size / Ordering Information

Code #	Balloon Diameter	Balloon Length	Minimum Sheath I.D.	Guide Catheter (FR)	Working Length
80202	1.0 mm	20 mm	0.060"	6	134 cm
80208	1.5 mm	20 mm	0.065"	6	134 cm
80214	2.0 mm	20 mm	0.070"	6	134 cm
80220	2.5 mm	20 mm	0.070"	6	134 cm
80232	3.0 mm	20 mm	0.070"	6	134 cm
80244	3.5 mm	20 mm	0.078"	7	134 cm
80250	4.0 mm	20 mm	0.078"	7	134 cm
80217	2.0 mm	50 mm	0.078"	7	134 cm
80235	3.0 mm	50 mm	0.078"	7	134 cm
80253	4.0 mm	50 mm	0.078"	7	134 cm

ATRIUM MEDICAL CORPORATION
5 Wentworth Drive
Hudson, New Hampshire 03051 U.S.A.
☎ 603-880-1433 📠 603-880-6718

ATRIUM EUROPE B.V.
Rendementsweg 20B
3641 SL Mijdrecht, The Netherlands
☎ +31-297-230-420 📠 +31-297-282-653

ATRIUM AUSTRALIA-PACIFIC RIM PTY. LTD.
Level 6, 579 Harris Street
Ultimo NSW 2007 Australia
☎ +61-2-8272-3100 📠 +61-2-8272-3199

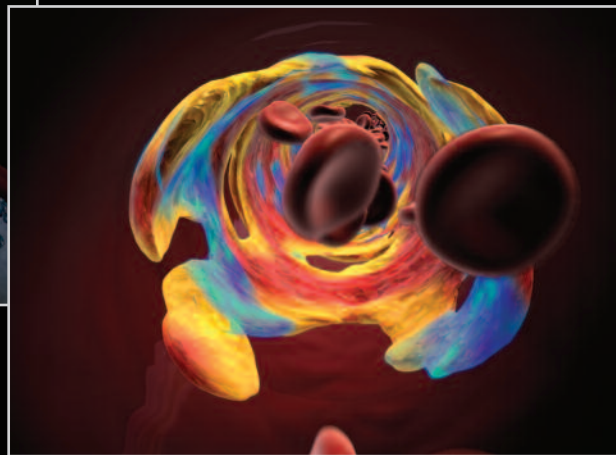
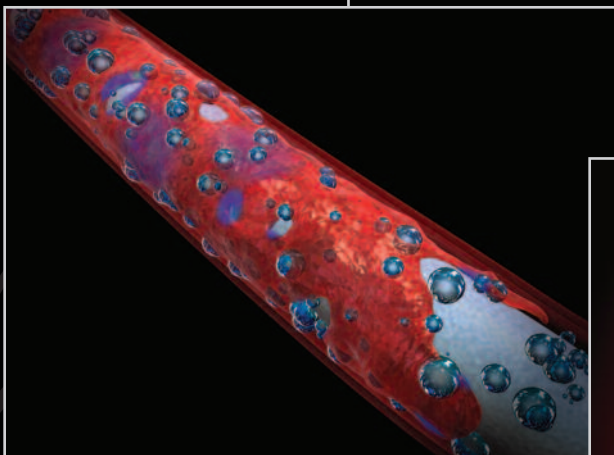
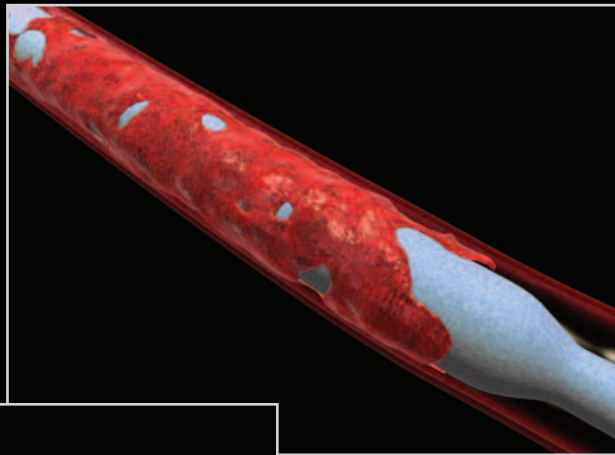


ClearWay™ RX

Local Therapeutic Infusion Catheter

CLINICAL EXPERIENCE

- Slow Flow/No-Reflow
- AMI/Thrombus Management
- Peripheral Thrombus
- SVG Treatment



CE 0050