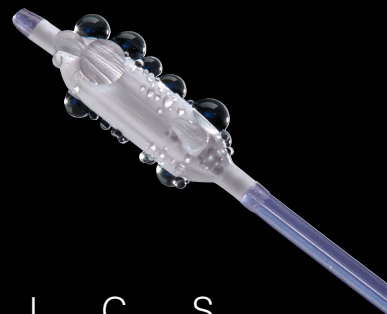


# ClearWay™ OTW

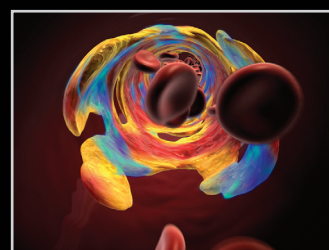
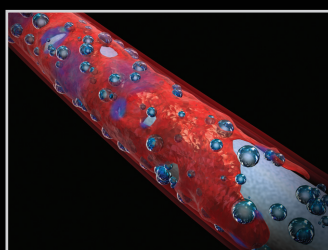
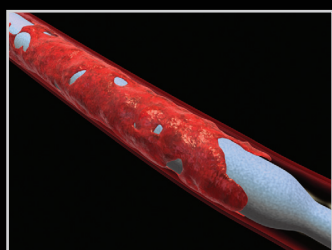
Local Infusion Catheter



O C I T H E R A P E U T I C S

---

OCCLUSION      CONTAINMENT      INFUSION



## Catheter Preparation

1. Remove ClearWay™ OTW from the protective hoop.
2. Do not remove the protective sheath.
3. To prep ClearWay™ OTW, attach a syringe filled with saline to hub of the ClearWay catheter and flush (5-10cc) with a positive prep until fluid is observed coming out of the ends of the protective sheath. DO NOT pull a negative after priming balloon.
4. Remove protective sheath from primed balloon and save > do not discard sheath.
5. Insert ClearWay™ OTW onto the guide wire and pass into introducer sheath.
6. Once ClearWay™ OTW enters the hemostatic valve, back bleed to ensure that no air has entered the system.
7. Advance ClearWay™ OTW to the desired treatment location using the radiopaque marker under fluoroscopy to confirm proper placement and location.
8. Prep syringe with chosen agent and infuse with constant, steady pressure.
9. After patient infusion, flush balloon with 5cc of saline prior to catheter withdrawal.
10. Pull a gentle negative on ClearWay™ OTW. Pull ClearWay™ OTW back from treatment area for angiographic analysis, if required. If additional infusion is required, repeat steps 7-10. Upon completion of infusion, remove ClearWay™ OTW from patient.
11. After removal from patient, flush catheter with saline after use and replace protective sheath to safeguard balloon for subsequent infusion procedures in the same patient (single patient use).
12. Examine balloon, refold if necessary and repeat priming steps above with protective sheath in place prior to patient reuse.



## Precautions

1. Predilation is recommended before ClearWay™ OTW infusion catheter use.
2. The ClearWay™ OTW primed balloon crossing profile is larger than PTA catheters, hence increased resistance or drag against the introducer sheath will be experienced with this local infusion device.

 Refer to Instructions for Use

Introducer Sheath Compatibility	
7Fr	4.0 - 5.0mm
8Fr	6.0 - 8.0mm



**ATRIUM MEDICAL CORPORATION**  
5 Wentworth Drive  
Hudson, New Hampshire 03051 U.S.A.  
☎ 603-880-1433 📠 603-880-6718

**ATRIUM EUROPE B.V.**  
Rendementsweg 20 B  
3641 SL Mijdrecht, The Netherlands  
☎ +31-297-230-420 📠 +31-297-282-653

**ATRIUM AUSTRALIA-PACIFIC RIM PTY. LTD.**  
L 1 Bridgepoint, 3 Brady Street  
Mosman NSW 2088 Australia  
☎ +61-2-9960-0169 📠 +61-2-8969-2735

[www.atriummed.com](http://www.atriummed.com)