

**Advanta™ V12 Covered Stent Ordering Information**

Part No.	Diameter	Length	Catheter Length	Part No.	Diameter	Length	Catheter Length
85340	5mm	16mm	80cm	85350	5mm	16mm	120cm
85341	5mm	22mm	80cm	85351	5mm	22mm	120cm
85320	5mm	38mm	80cm	85330	5mm	38mm	120cm
85321	5mm	59mm	80cm	85331	5mm	59mm	120cm
85342	6mm	16mm	80cm	85352	6mm	16mm	120cm
85343	6mm	22mm	80cm	85353	6mm	22mm	120cm
85322	6mm	38mm	80cm	85332	6mm	38mm	120cm
85323	6mm	59mm	80cm	85333	6mm	59mm	120cm
85344	7mm	16mm	80cm	85354	7mm	16mm	120cm
85345	7mm	22mm	80cm	85355	7mm	22mm	120cm
85324	7mm	38mm	80cm	85334	7mm	38mm	120cm
85325	7mm	59mm	80cm	85335	7mm	59mm	120cm
85326	8mm	38mm	80cm	85336	8mm	38mm	120cm
85327	8mm	59mm	80cm	85337	8mm	59mm	120cm
85328	9mm	38mm	80cm	85338	9mm	38mm	120cm
85329	9mm	59mm	80cm	85339	9mm	59mm	120cm
85360	10mm	38mm	80cm	85364	10mm	38mm	120cm
85361	10mm	59mm	80cm	85365	10mm	59mm	120cm

**NEW Large Diameter Advanta™ V12 Covered Stent Ordering Information**

Part No.	Diameter	Length	Catheter Length	Part No.	Diameter	Length	Catheter Length
85370	12mm	29mm	80cm	85379	12mm	29mm	120cm
85371	12mm	41mm	80cm	85380	12mm	41mm	120cm
85372	12mm	61mm	80cm	85381	12mm	61mm	120cm
85373	14mm	29mm	80cm	85382	14mm	29mm	120cm
85374	14mm	41mm	80cm	85383	14mm	41mm	120cm
85375	14mm	61mm	80cm	85384	14mm	61mm	120cm
85376	16mm	29mm	80cm	85385	16mm	29mm	120cm
85377	16mm	41mm	80cm	85386	16mm	41mm	120cm
85378	16mm	61mm	80cm	85387	16mm	61mm	120cm

**One-Step Precision  
Stent Deployment**



**ATRIUM MEDICAL CORPORATION**  
5 Wentworth Drive  
Hudson, New Hampshire 03051 U.S.A.  
☎ 603-880-1433 📠 603-880-6718

**ATRIUM EUROPE B.V.**  
Rendementsweg 20B  
3641 SL Mijdrecht, The Netherlands  
☎ +31-297-230-420 📠 +31-297-282-653

**ATRIUM AUSTRALIA-PACIFIC RIM PTY. LTD.**  
Level 6, 579 Harris Street  
Ultimo NSW 2007 Australia  
☎ +61-2-8272-3100 📠 +61-2-8272-3199

[www.atriummed.com](http://www.atriummed.com)

© Atrium Medical Corporation 2010. All rights reserved.  
Printed in U.S.A. 7/10 Part #0010F.

Atrium, Advanta V12 and Aneria are trademarks  
of Atrium Medical Corporation.

Patents: 5,925,074, 5,980,799, 6,010,529,  
6,270,523. Other patents pending.

V12 is not available in the U.S.



# Vascular V12 covered stent

## s t e n t

## t e c h n o l o g y

The **Ultra-Thin V12 covered stent** uses the latest developments in PTFE film lamination technology to maximize stent conformability. Atrium's **Film-Cast Encapsulation Technology** protects the 316L stainless steel struts from contacting the luminal wall and is designed to expand uniformly to prevent tissue from prolapsing through the expanded stent. The patented film-cast covering also helps evenly distribute radial expansion stress during balloon deployment, creating more **Uniform Deployment** and minimizing trauma to the supporting tissue.

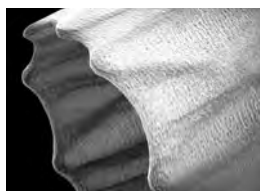
The V12 covered stent has the **Lowest Crossing Profile** compared to other commercially available covered stents. Lower profile means more efficient delivery.

- **Film-Cast Encapsulation Technology**
- **One-Step Delivery System**
- **Ultra Low Crossing Profile**
- **Precision Deployment**

### Stent Delivery

	5mm	6mm	7mm	8mm	9mm	10mm	12mm	14mm	16mm
<b>V12</b>	6/7Fr	6/7Fr	7Fr	7Fr	7Fr	7Fr	9Fr	11Fr	11Fr
Competitor A	7Fr	7Fr	8Fr	8Fr	9Fr	11Fr	12Fr (11 & 13mm)		
Competitor B		8Fr	8/9Fr	9Fr	9Fr	9Fr	N/A	N/A	N/A
Competitor C		9Fr	9Fr	9Fr	10Fr	10Fr	11Fr	12Fr	N/A

Atrium's **V12 PTFE covered stent** is a perfect blend of stent craftsmanship and biomaterial science. The **Balloon Expandable** covered stent provides unsurpassed deployment accuracy due to its precision stent delivery platform and its low foreshortening design. The V12 stent is crafted using state-of-the-art Finite Element Analysis and Atrium's patented **Film-Cast** PTFE encapsulation technology. The Balloon Deployable stent utilizes a **One-Step Deployment** technique for precise, accurate placement.



**Film-Cast Encapsulation Technology**  
 Completely embeds the struts of the V12 stent into an extraordinary thin film of PTFE Biomaterial. The film-cast covering expands uniformly with stent expansion.

When precision deployment means everything, let Atrium's low profile platform make difficult entry targets possible. The ultra-thin premounted stent was designed with an extraordinarily small crossing profile. The patented covered stent design is a one-step precision delivery system, and is suitable for expansion diameters ranging from 5mm to 22mm.\* The ultra low crossing profile is made possible by Atrium's exclusive **PowerCrimp Technology** and Atrium's latest Anertia™ balloon catheter technology. The Atrium balloon expandable V12 covered stent...the new benchmark for ease of use and precision deployment.



**PowerCrimp™ Technology**  
 Ensures controlled delivery and accurate deployment



# one-step deployment **V12 PTFE** covered stent

\*5mm to 10mm V12 sizes can be post-dilated to 12mm. 12, 14, & 16 Large Diameter V12 sizes can be post-dilated to 22mm.