



# FLIXENE™ IFG

Vascular Graft

**The Best Engineered Dialysis Access Graft...  
There Can Only Be One.**

## **The FLIXENE™ Vascular Graft**

Available with an expanded family of *graduated taper* sizes, *reinforced trumpet hoods* and a novel IFG configuration to address all of your challenging venous anastomotic patient needs. Let Atrium's FLIXENE™ vascular graft technology help maximize your patient's dialysis treatment options with the most durable composite PTFE graft ever constructed.



 **ATRIUM**  
[www.atriummed.com](http://www.atriummed.com)

# FLIXENE™ IFG

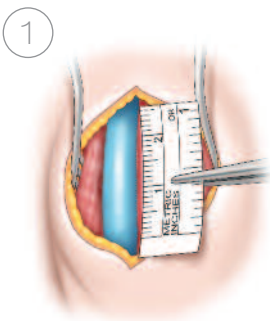
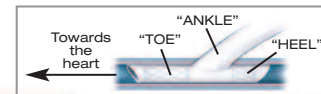


## PRODUCT DESCRIPTION

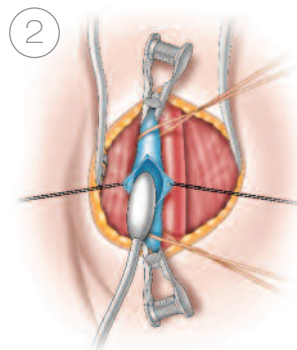
The Flixene IFG (Intraluminal Flow Guard) vascular graft is specifically designed as an upper arm dialysis graft. This new concept facilitates the insertion of an intraluminal graft portion directly into the vein.

The IFG is designed to help improve flow dynamics along the distal outflow region, and reduce arterialized pressure along the A-V anastomotic junction.

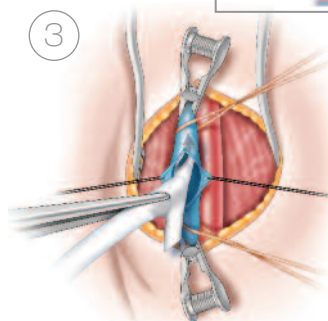
## IMPLANTATION TECHNIQUE



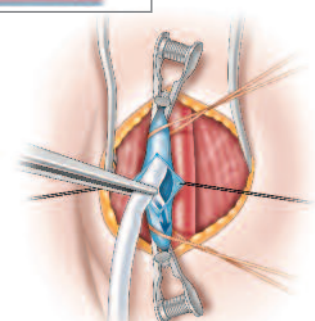
Minimum 5.5 mm cut down for vein exposure, 2.5 cm venotomy



Dilate the vein



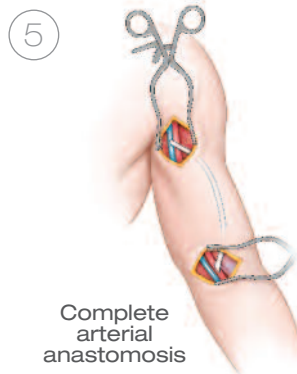
Insert "TOE" first



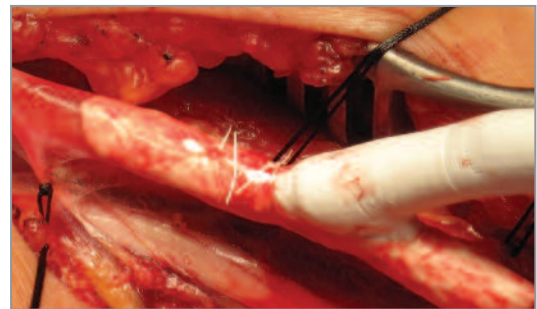
Insert "HEEL" second



Tunnel graft into place



Complete arterial anastomosis



FLIXENE™ IFG in the Axillary Vein  
Image Courtesy of Dr. Charles Moomey

## FLIXENE IFG ORDERING INFORMATION

| Diameter | Length | Description            | Code # |
|----------|--------|------------------------|--------|
| 4-7mm    | 35 cm  | GWT with 5mm IFG w/GDS | 25081  |
| 4-7mm    | 30 cm  | GWT with 5mm IFG w/GDS | 25098  |
| 6 mm     | 30 cm  | 5mm IFG w/GDS          | 25083  |
| 6 mm     | 45 cm  | GW with 5mm IFG w/GDS  | 25086  |
| 4-7mm    | 45 cm  | GWT with 5mm IFG w/GDS | 25079  |

Additional sizes pending.

**ATRIUM MEDICAL CORPORATION**  
5 Wentworth Drive  
Hudson, New Hampshire 03051 U.S.A.  
☎ 603-880-1433 ☎ 603-880-6718

**ATRIUM EUROPE B.V.**  
Rendementsweg 20 B  
3641 SL Mijdrecht, The Netherlands  
☎ +31 297 230 420 ☎ +31 297 282 653

**ATRIUM AUSTRALIA-PACIFIC RIM PTY. LTD.**  
Level 6, 579 Harris Street  
Ultimo NSW 2007 Australia  
☎ +61 2 8272 3100 ☎ +6 12 8272 3199